



Tour to Pacific Clay

Don't miss this amazing Video and learn how the best brick is made!

**Sustainability
& Low Carbon**

**Design
& Architecture**

**Energy Efficiency
& Net Zero**

**Technology
& Innovation**

Concrete Block is Back!

Le Parc residential building in San Diego, CA



The Tallest Residential Building in North Park, built with CONCRETE BLOCK

A new Landmark rises at 2820 Polk Avenue in San Diego's North Park neighborhood, **Le Parc**, a 25,562-square-foot multifamily complex with 32 units, is now the tallest residential building in the neighborhood, with luxury aesthetics and creative design solutions that almost seem to reinvent the art of masonry design.

This eight-story project optimizes masonry materials, assemblies, and environmental systems to reduce costs and construction times, increase unit density and enhance living quality while meeting sustainability and energy efficiency goals.

Continues at page 4.



- ✓ Lower Mechanical Demand, and Increased Energy Efficiency.
- ✓ Durability.
- ✓ Fire and Seismic Resistance.
- ✓ Enhanced Acoustics.
- ✓ Reduced Insurance Cost.
- ✓ Improved Construction Speed.
- ✓ Construction Cost Reduction and Predictability.
- ✓ Sustainability, Using 100% Locally Sourced CMU from RCP Block and Brick.



Manufacturing a Sustainable Masonry Unit.



Regionally Sourced Materials

All raw materials are **sourced from within 120 miles** of our manufacturing plant.



Recycled Materials

Each year, approximately **20,000 cu yds of recycled materials** are used in the production of masonry units.



Energy-Free Curing Process

RCP has **not used natural gas** in the curing of our products for over 35 years.



Solar Power

Through solar power, RCP generates **91% of the energy needed** to run our manufacturing facilities.



Carbon Sequestration

CMUs absorb and trap **100% of the CO2** emitted during the manufacturing of the cement used in each unit.



Trucking Fleet

RCP's entire fleet meets California's **Tier 4 engines and emissions** compliance standards.

RCP Block & Brick is conscientious of how the manufacturing and supplying of masonry materials affects our environment. We continue to implement changes and adapt our processes to be the best stewards for our environment.

Learn more about our efforts: www.rcpblock.com/sustainability.html

Design Tips, Thermal Mass & Energy Efficiency

When designing a project with **Energy Efficiency** and **Net Zero** goals, keep in mind that by designing with masonry walls you increase **Thermal Mass**, helping to regulate temperature inside of the buildings in both hot and cold climates.

By taking advantage of masonry walls mass properties, insulation requirements can be reduced significantly because of passive heating and cooling, resulting in potential reduction of energy demand for HVAC and mechanical systems, and therefore lower energy costs.

Interested in learning more about Thermal Mass and Energy Efficiency with Masonry? Reach out to CMC and we will connect you with an expert to assist.

CMC is here to connect you with the right people to successfully integrate masonry into your project.

Our network of experts is available to assist with everything from material selection and technical advisory to innovative solutions and cost estimates.



The powerful design of this building in concrete block by **oo-d-a studio** is only the beginning, a thoughtful approach to taking full advantage of CMU benefits is what makes this project stand out and be a great project.

The precise, scored concrete masonry units (CMUs) seamlessly manufactured by **RCP Block & Brick** create a modern, luxuriously engineered appearance through their running bond pattern and careful stacking. The mindful and creative use of exposed CMU, creating patterns in the exterior and interior is key to the aesthetic vision for Le Parc, showcasing the limitless design potential of concrete block in architectural design.

RCP worked closely with the architects, who selected for Le Parc a vertical 3 score pattern on both faces of the CMU providing both interior and exterior finish to be completed with a single trade. This pattern provides clean, continuous vertical grids in the walls. RCP modified molds to allow this pattern to occur throughout the buildings, including structural, veneer, corner, and lintel conditions.

Sustainable, naturally sourced, cost effective

Masonry materials are sourced naturally without depleting limited resources. With their high thermal mass, masonry materials can effectively store and release heat. This helps maintain a consistent interior temperature in both hot and cold climates, reducing heating and cooling costs, being energy efficient and complying with green building codes.

Fire-resistant and non-combustible

Brick and stone are non-combustible materials that can prevent the spread of fire. Concrete masonry units (CMU) and other masonry materials are often used in fire-resistant barriers to enhance safety as well.

Durable and long lasting

Masonry is resistant to pests, rot, and certain weather conditions, contributing to its long lifespan and reduced need for frequent repairs or replacements. The industry launches new materials and technologies every year, ensuring masonry remains the best solution for long lasting and cost-effective building projects.

A vital component of California infrastructure

In California, masonry plays a vital role in construction and infrastructure development. Masonry buildings, reinforced with steel, can withstand earthquakes and other seismic activity.



"We love that the building bones are also the outer skin." ... "When the mason lays down the block, that block is the finishing material on both sides."
Dominique Houriet, architect.

"Artificial cladding does not bury these structures. Exposed beams and walls are part of a sculpted, cohesive look."
Christian Dimeling, architect.



Making Energy-Efficient Choices During Design: An Interactive Live Analysis

Online via Zoom

Fri, September 6th
1:00 PM - 2:00 PM PDT



Webinars, Events, Case Studies, Design, Technology and Innovation

Follow CMC Social Media



Concrete Block is Back!

CALIFORNIA MASONRY COUNCIL



Connecting the AEC Community with the Masonry Trade



- Sustainability & Low Carbon
- Architecture & Design
- Energy Efficiency & Net Zero
- Technology & Innovation

Subscribe to our Monthly Newsletter



Pacific Clay PRODUCTS INC.

Happy 4th of July!!



Design Inspiration



Del Oro High School by HMC Architects

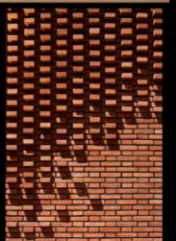


Design Inspiration

The Yves Saint Laurent Museum at Marrakech is a superb example of what can be achieved with the use of traditional materials as brick for modern and unconventional design.

Studio KO not only uses brick in the building's envelope design but highlights the beauty and textures of this material playing with patterns, lights and shadows in a magnificent way.

#MasonryMatters



SEPT 17 + 18 | ANAHEIM, CA

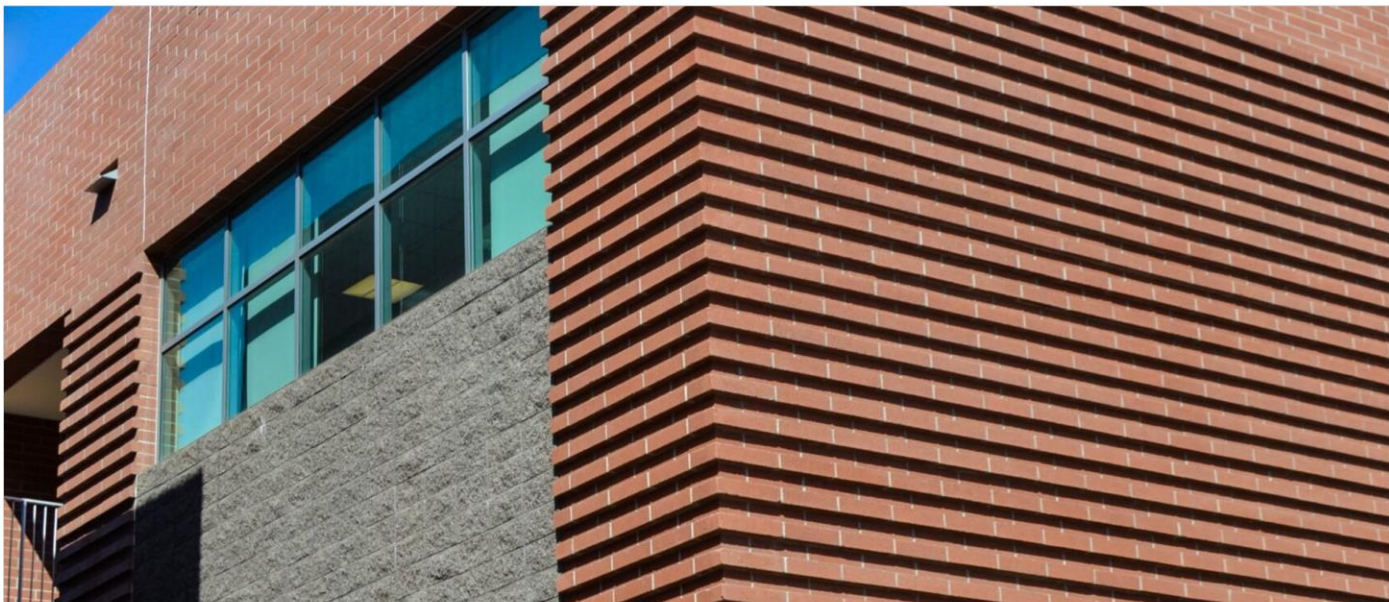
NETZER CONFERENCE

CARBON
CLIMATE
EQUITY
ESG
NET ZERO
RESILIENCE

Produced by  Verdical Group



CMC will be @ the Net Zero Conference 2024, Anaheim, CA.



Temple City High School's Masonry Excellence

Nestled in the West San Gabriel Valley, just 15 miles northeast of Los Angeles, Temple City High serves grades nine through twelve. Since its founding back in 1954, Temple City High School has been on a mission to continually raise the bar.

It's not just any high school. It's a place that's completely focused on its students, offering an academic experience that's as unique as it is thorough, set in an intellectually stimulating environment.

Designed by LPA Design Studios, built by Angeles Contractor (GC), and masonry contractor Winegardner Masonry, masonry producer/supplier ORCO Block & Hardscape.

READ MORE



Something **BIG** is coming in CA

Sustainability
& Low Carbon

Design
& Architecture

Energy Efficiency
& Net Zero

Technology
& Innovation



CMAA
SOUTHERN CALIFORNIA CHAPTER

SUSTAINABILITY & OWNERS

VIRTUAL EVENT

FEDERAL BUILDING SUSTAINABILITY – GOVERNMENT ACCOUNTABILITY OFFICE PERSPECTIVE

WEDNESDAY
SEPTEMBER 4, 2024
12:00 PM - 1:00 PM

SPONSORSHIPS AVAILABLE

*\$55 - CMAA MEMBERS
\$85- NON-MEMBERS
OWNERS AND STUDENT MEMBERS FREE*



California Masonry Council (CMC)'s mission is to be a catalyst, advocate, and the best masonry resource in California.

Our organization promotes masonry as an essential design and building material while uniting our trade with the AEC community (architecture, engineering, and construction).

CMC is a non-profit organization.



Subscribe to our Newsletter

