

Design & Legacy

#MasonryMatters

DLRGROUP



Los Angeles Memorial Coliseum
Renovation & Modernization
by DLR Group

CALIFORNIA
MASONRY
COUNCIL
A DIVISION OF MIA

Event Alert!

SAVE THE DATE – MAY 9, 2025

CALIFORNIA
2025 SUMMIT
& EXPO
MASONRY



The first Masonry Summit & Expo
in California uniting our trade with
the AEC Community

Venue: Luskin Conference Center & Hotel @ UCLA



SAVE
THE DATE!
MAY 9, 2025

+20 World Class
Speakers

+60 Exhibitors

Learning &
Continued Education

Networking with
Masonry & AEC



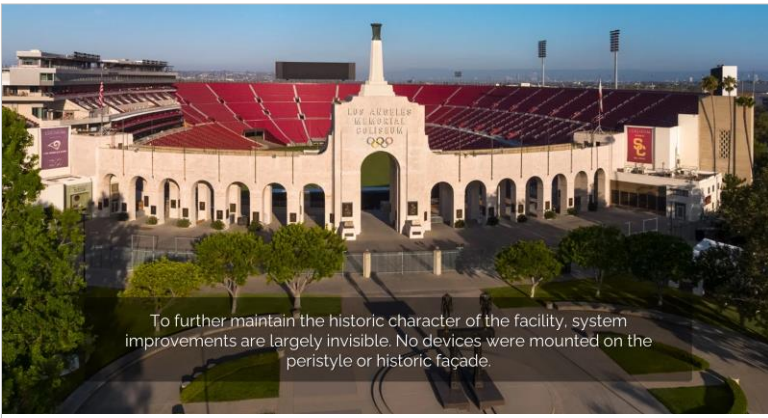
Produced by California Masonry Council, a division of MIA
Event Production by Verdical Group
Contact: info@CaliforniaMasonryCouncil.org

CONTACT US

Preserving an Icon for Future Victories

The Los Angeles Memorial Coliseum was built in 1923, and the USC Trojans played their inaugural game on October 6, 1923. Since then, it's also hosted two Olympics, two Super Bowls, a World Series, a Papal Mass, visits from three U.S. Presidents, and scores of additional sporting and social events.

DLR Group led the design of a \$315-million renovation and modernization encompassing well over 1,000,000 total square feet to honor the tradition and heritage of the historic facility while reinventing the game-day experience for fans.



To further maintain the historic character of the facility, system improvements are largely invisible. No devices were mounted on the peristyle or historic façade.



"The stadium has seen changes over the years to accommodate updated uses and seismic strengthening; however, the basic design configuration, including its complex geometric footprint, curved peristyle, and primary concrete structure have remained the same since 1923. The coliseum is a State Historical Landmark and was designated as a National Historic Landmark when listed on the National Register of Historic Places in 1984."

Sustainable, naturally sourced, cost effective

Masonry materials are sourced naturally without depleting limited resources. With their high thermal mass, masonry materials can effectively store and release heat. This helps maintain a consistent interior temperature in both hot and cold climates, reducing heating and cooling costs, being energy efficient and complying with green building codes.

Fire-resistant and non-combustible

Brick and stone are non-combustible materials that can prevent the spread of fire. Concrete masonry units (CMU) and other masonry materials are often used in fire-resistant barriers to enhance safety as well.

Durable and long lasting

Masonry is resistant to pests, rot, and certain weather conditions, contributing to its long lifespan and reduced need for frequent repairs or replacements. The industry launches new materials and technologies every year, ensuring masonry remains the best solution for long lasting and cost-effective building projects.

A vital component of California infrastructure

In California, masonry plays a vital role in construction and infrastructure development. Masonry buildings, reinforced with steel, can withstand earthquakes and other seismic activity.

BIM Tools

Applications for Revit and Assets for BIM

BIM continues to expand in use as its benefits have become increasingly evident. **Angelus Block** recognizes the need for tools to bring efficiency to the workflow of architects, engineers, and designers—especially as it relates to masonry.

Please feel free to contact us at contact@angelusblock.com for more information and any assistance you may need.



www.AngelusBlock.com

Angelus-Sponsored Tools

Masonry IQ DESIGN

Masonry-Intelligent Add-In for Revit*

Masonry IQ DESIGN is a Revit add-in that generates a true component level BIM model for masonry units. Sections and bond patterns are drawn for you by Masonry IQ and kept in sync with data in the model. Check modularity, and create custom patterns, rendering with content from Angelus Block, and many more benefits, all without overwhelming Revit with data.



Angelus Block 3D Unit Library

Angelus shapes and designs in 3D models

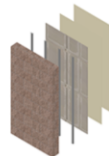
Browse sizes, configurations, colors, and textures and preview the resulting unit in real time. Downloaded models include SketchUp and AutoCAD files, along with color/texture maps. [Free To The User.](#)



BIMsmith® Forge

Design and Download Custom Wall Assemblies.

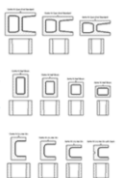
Founded by practicing architects who envisioned a better way of working with Revit, BIMsmith® created a unique and easy-to-use web-based app to assemble and generate walls, floors, ceilings, and roofs. Forge lets you quickly form complete Revit assemblies.



BIMsmith® Market

Download Angelus CMU Revit Families and More

Market includes Angelus CMU families, starter wall assemblies, specifications and data sheets.



\$350 Million
Renovation & Modernization

+1,000,000
Square Feet

+800,000
Hours of Labor

470
Concrete Truckloads

1,740
Tons of Rebar

+150,000
Concrete Blocks (CMU)

LOS ANGELES MEMORIAL COLISEUM - RENOVATION

Architect:
DLR Group

Client:
University of Southern California

General Contractor:
AECOM / Hathaway Dinwiddie

Masonry Contractor:
Frank S. Smith Masonry

Block Producer:
Angelus Block

[LEARN MORE](#)



California Masonry Summit and Expo 2025

[READ MORE](#)

The California Masonry Summit & Expo convenes AEC leaders to collaborate, network, learn, and bridge information gaps about masonry.

A full-day conference and expo taking place in Los Angeles, CA at the Luskin Conference Center in the heart of UCLA.

An opportunity for AEC professionals to network and connect with producers, contractors, and masonry experts, and to learn about sustainability, decarbonization, energy efficiency, innovation, and technology in the masonry industry.



Concrete masonry is recognized as an all-around performer – with seismic and fire resistance, durability, sound dampening, design flexibility, multiple functions, and cost benefits. Common concrete block contains a much lower percentage of cement than ready-mix concrete, giving it a good head start as a carbon-reducing material.

Angelus Block has taken this further with CarbonKind, a concrete masonry unit (CMU) with substantially lower CO₂ impact. CarbonKind does not use higher Green House Gas ordinary Portland cement, but instead incorporates a blended cement, Portland-limestone cement.

CarbonKind fully meets ASTM C90 and is available in all Angelus-produced CMU. Angelus Block is fully committed to advancing the sustainable contributions of concrete masonry and offers CarbonKind products without a cost premium.

Contact us for more information about CarbonKind Low Impact Systems and LEED Benefits.

Achieves the largest CO₂ reductions for CMU in the Southern California region.



2021 Material Baselines (v2)
For Concrete Masonry Units

Typical 370 kg CO₂e

Baseline 545 kg CO₂e



Average MW Impact
215 kg CO₂e

42%

61%

Reductions From Baselines

www.AngelusBlock.com
contact@AngelusBlock.com



CALIFORNIA MASONRY SUMMIT & EXPO

SAVE THE DATE!
MAY 9, 2025

Sustainability + LCAs + EPDs

Architecture & Design Trends

Low Carbon + Decarbonization

Net Zero + Energy Efficiency

Building + Energy Code

Resilience + Fire Resistance

Technology + Robotics

BIM + VDC + AEC Software

Building Materials + Products

Are you a professional in the AEC community working with Concrete Block, Brick, or Stone?

Are you interested in learning and connecting with other professionals and masonry stakeholders?

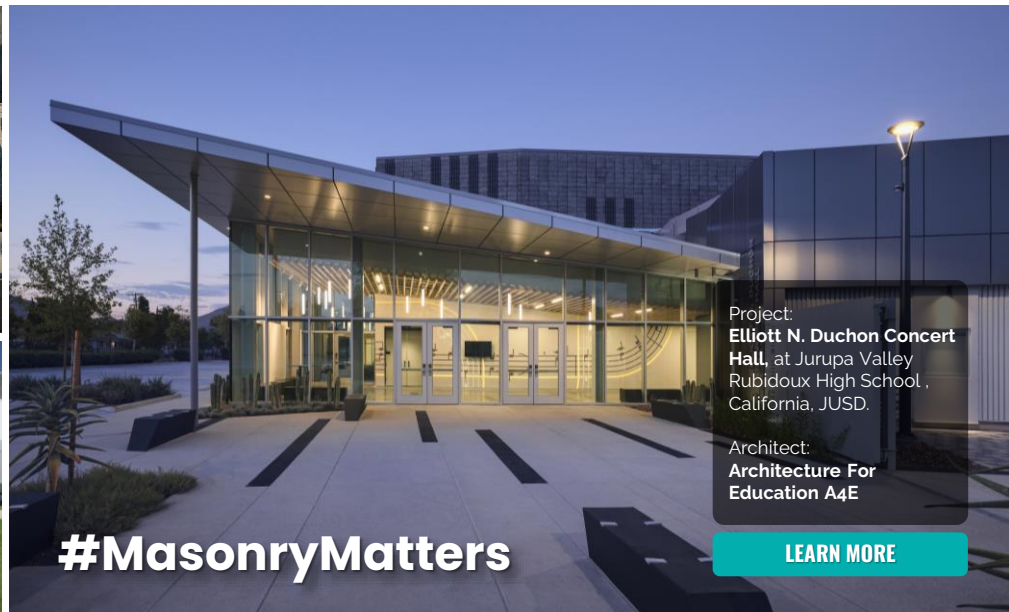
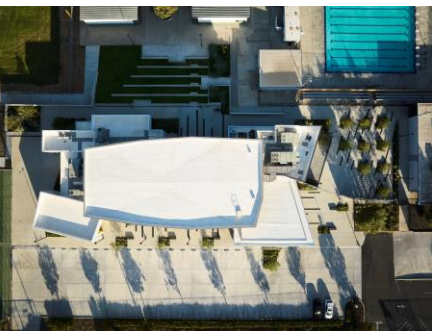
Do you want to stay informed about new trends, products, building materials, sustainability, energy efficiency, software, innovation and technology?

Architects, Engineers, Designers, Construction Contractors, and any AEC professionals designing, specifying, and building with masonry products, this event is for you!

Contact us: info@CaliforniaMasonryCouncil.org

[LEARN MORE](#)

Connecting the A/E/C Community with the Masonry Trade



Project:
Elliott N. Duchon Concert Hall, at Jurupa Valley Rubidoux High School, California, JUSD.

Architect:
Architecture For Education A4E

#MasonryMatters

[LEARN MORE](#)

THE NEXT GENERATION OF LIFT-ASSIST TECHNOLOGY IS HERE.

Featuring a **versatile and battery-powered design**, the MZ100 is the latest addition to the MULE product family to accelerate block laying and enhance ergonomics on the jobsite.

The machine is fully weather-proof to withstand outdoor construction work but is also compact enough to accommodate interior work.

ENGINEERED TO AMAZE

Introducing the compact, versatile, and battery-powered MULE MZ100.

[SEE THE MULE AT WORK](#)



- ULTIMATE PORTABILITY
- IMPROVE SAFETY
- ENHANCE PRODUCTIVITY
- BOOST PROFITABILITY
- EFFICIENT RECHARGING
- SIMPLE OPERATION



Del Oro High School by HMC Architects

Education, Empathy, and Positive Change in a 77-acre canvas in Bakersfield, California, has transformed into an innovative high school fostering sustainability, student well-being, and empowerment for at-risk learners to reach their full potential.

[READ MORE >](#)



Le Parc residential building in San Diego, CA.

A new landmark rises at 2820 Polk Avenue in San Diego's North Park neighborhood, Le Parc, a 25,562-square-foot multifamily complex with 32 units, is now the tallest residential building in the neighborhood, with luxury aesthetics and creative design solutions that almost seem to reinvent the art of masonry design.

[READ MORE >](#)



Rubidoux Concert Hall

Jurupa Unified School District (JUSD) wanted to build a performing arts facility for Rubidoux High School (RHS), a school in an under-resourced community which lacked a performance venue for its thriving arts & music program. Working with school stakeholders, the architectural team produced a master plan and analyzed three potential sites on RHS's dense campus.

[READ MORE >](#)



UC Berkeley Anchor House Dormitory

The Anchor House is a transformative dormitory project that sets a new standard for student residential living. Located just one block from UC Berkeley's campus and three blocks from the Berkeley BART station, the mixed-use dormitory is designed and programmed to help the University's transfer students thrive academically, socially, and culturally.

[READ MORE >](#)



Yves Saint Laurent Museum

The Yves Saint Laurent Museum at Marrakech is a superb example of what can be achieved with the use of traditional materials as brick for modern and unconventional design. Studio KO not only uses brick in the building's envelope design but highlights the beauty and textures of this material playing with patterns, lights and shadows in a magnificent way.

[READ MORE >](#)

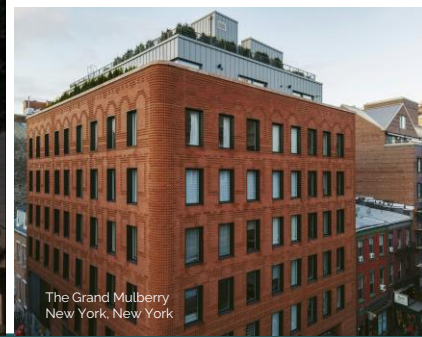


Brick Design Inspiration

UC Berkeley Anchor House Dormitory by **Morris Adjmi Architects**



520 West 20th
New York, New York



The Grand Mulberry
New York, New York



California Masonry Council (CMC)'s mission is to be a catalyst, advocate, and the best masonry resource in California.

Our organization promotes masonry as an essential design and building material while uniting our trade with the AEC community (architecture, engineering, and construction).

CMC is a non-profit organization.



Subscribe to our Newsletter

